

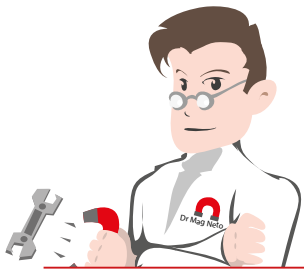
# Magnets for sound systems

## Technical Information Sheet

**HIGH PERFORMANCE MAGNETIC MATERIALS**

**ECONOMIC MAGNETIC MATERIALS**

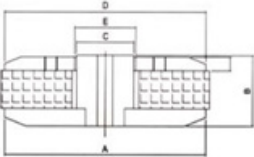
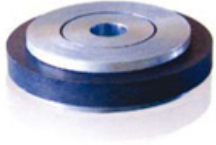
	NEODYMIUM	COMPRESSED PLASTO-NEODYMIUM	SAMARIUM	FLEXIBLE PLASTO-NEODYMIUM	ALNICO	INJECTION MOULDED PLASTO-MAGNET	FERRITE	FLEXIBLE PLASTO-FERRITE
<b>SPECIFICATIONS</b>								
<b>ENERGY PRODUCT UP TO... (KJ/M3)</b>	366 KJ/M3	335 KJ/M3	240 KJ/M3	68 KJ/M3	92 KJ/M3	50 KJ/M3	40 KJ/M3	14 KJ/M3
<b>TEMPERATURE RANGE UP TO MAX.</b>	220 °C	180 °C	350 °C	120 °C	550 °C	120 °C	300 °C	80 °C
<b>FLEXIBLE</b>				•				•
<b>TYPES OF MAGNETISATION</b>	AXIAL, MULTI-POLE, RADIAL, DIAMETRAL	BIPOLAR, MULTI-POLE, RADIAL, DIAMETRAL	AXIAL, MULTI-POLE, RADIAL, DIAMETRAL	AXIAL, BIPOLAR, MULTI-POLE	AXIAL, DIAMETRAL	AXIAL, MULTI-POLE, RADIAL, DIAMETRAL	AXIAL, MULTI-POLE, RADIAL, DIAMETRAL, HALBACH	AXIAL, BIPOLAR, MULTI-POLE, CIRCULAR
<b>ACID PROOF</b>								
<b>WATERPROOF</b>								
<b>FIRE PROOF</b>								
<b>GREASE AND OIL PROOF</b>	•	•	•		•	•	•	
<b>OPTIONALS</b>								
<b>Zn COATING</b>	•							
<b>Ni COATING</b>	•							
<b>NiCuNi COATING</b>	•							
<b>NiCuNi + EPOXY COATING</b>	•							
<b>NiCuNi + Sn COATING</b>	•							
<b>PASSIVATED</b>	•							
<b>POLISHED</b>							•	
<b>DOUBLE-SIDED ADHESIVE FILM</b>	•		•	•	•		•	•
<b>CUSTOMISED LOGO</b>	•	•	•	•	•	•		•
<b>TYPES OF APPLICATION</b>								
<b>Loudspeakers</b>	•	•	•	•	•	•	•	•
<b>Microphones</b>	•		•		•	•	•	
<b>Professional headsets</b>	•	•		•				
<b>Professional ear buds</b>	•	•		•	•			
<b>Professional audio systems</b>	•	•		•	•			
<b>Acoustic speaker sensors</b>	•		•	•	•			
<b>sensors</b>	•	•	•	•		•	•	•



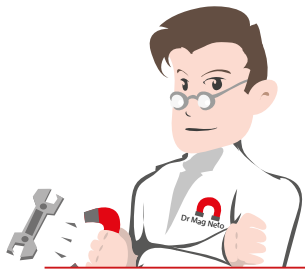
## Magnets for sound systems

### Technical Information Sheet

#### SC type



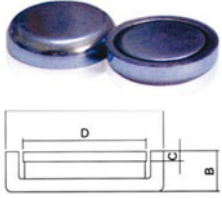
	T YOKE SIZE (AXB-C)	FERRITE MAGNET SIZE	WASHER SIZE (DxExH)	AIR GAP (mm)	MAGNETIC FLUX (GS)
<b>CODE</b>					
<b>SC-0400</b>	Ø210x54.6-Ø75.4	Ø220xØ110x25.4	Ø210x Ø78.5x10	1.550	
<b>SC-0401</b>	Ø70x23-Ø24.95	Ø80xØ32x15	Ø70xØ26.5x3	0.775	
<b>SC-0402</b>	Ø130x39-Ø36.9	Ø140xØ63x20	Ø130xØ39.4x8	1,250	
<b>SC-0403</b>	Ø195x42-Ø61.9	Ø200xØ80x20	Ø195xØ65.1x10	1.600	
<b>SC-0404</b>	Ø215x46.4-Ø98.5	Ø220xØ110x25.4	Ø215xØ104.5x8	3.000	
<b>SC-0405</b>	Ø130x38-Ø49.9	Ø130xØ63x20	Ø130xØ52.6x8	1.350	
<b>SC-0406</b>	Ø177x42-Ø61.9	Ø200xØ80x20	Ø177xØ64.9x10	1.500	
<b>SC-0407</b>	Ø110x41-Ø38.9	Ø115xØ43x22	Ø110xØ39.4x8	1.250	
<b>SC-0408</b>	Ø215xØ46.4- Ø98.5	Ø220xØ110x25.4	Ø215xØ102.1x8	1,800	
<b>SC-0409</b>	Ø177x42-Ø61.8	Ø200xØ80x20	Ø177xØ66.1x10	2.150	
<b>SC-0410</b>	Ø150x40.5-Ø49.9	Ø160xØ57x17.5	Ø150xØ52.7x8	1.400	
<b>SC-0410A</b>	Ø150x40.5-Ø49.9	Ø160xØ57x17.5	Ø150xØ52.7x8	2.150	
<b>SC-0411</b>	Ø57x21-Ø24.95	Ø59.5xØ32x13	Ø63xØ26.15x3	0.600	
<b>SC-0412</b>	Ø200xØ61.4- Ø101.6	Ø215xØ115x25.4	Ø200xØ106x14.3	2,200	
<b>SC-0413</b>	Ø200x61.4-Ø76.2	Ø212xØ99x25.4	Ø200xØ81x14.3	2.400	
<b>SC-0414</b>	Ø155.6x46.83- Ø63.119	Ø165xØ70x21	Ø155.56xØ65.66x 9.6	1.270	
<b>SC-0415</b>	Ø155.6x46.83- Ø50.75	Ø165xØ60x21	Ø155.58xØ52.96x 9.6	1.105	
<b>SC-0416</b>	Ø198x10-Ø78	Ø200xØ110x23	Ø176xØ103.5x10	12.750	10400
<b>SC-0417</b>	Ø94x27-Ø50	Ø102xØ60x17	Ø94xØ52x4	1.000	11000
<b>SC-0418</b>	Ø94x6-Ø25	Ø100xØ45x18	Ø94xØ38.6x5	6.800	15000



## Magnets for sound systems

### Technical Information Sheet

#### SA type



	T YOKE Ø (AXB)	MAGNET	WASHER (DxC)	AIR GAP (DxC)	MAGNETIC FLUX (GS)
<b>CODE</b>					
SA-0113	18x5	NdFeB	Ø12.8x 1.5	0.700	
SA-0113A	18x6	NdFeB	Ø12.95x2	0.575	
SA-0113B	21.4x7	NdFeB	Ø12.95x1.5	0.600	
SA-0113C	26.5x4.9	NdFeB	Ø12.95x1.5	0.750	6500
SA-0113E	18.5x6	NdFeB	Ø12.95x1.5	0.675	
SA-0113F	18x6.5	NdFeB	Ø13x2	0.625	
SA-01B13	21.5x8.5	NdFeB	Ø12.95 x2	0.625	
SA-0119	27.2x7	NdFeB	Ø18.95x2	1.125	
SA-0119A	26x6.5	NdFeB	Ø19x 1.5	1.250	
SA-0119B	26x6.5	NdFeB	Ø19x2	1.250	
SA-0119C	24.6x8.3	NdFeB	Ø18.6x 1.3	1,000	11000
SA-0119D	27.5x8.5	NdFeB	Ø19x2	0.750	
SA-0119DA	27.3x8.5	NdFeB	Ø19x2	0.750	10000
SA-0119F	26.1x8	NdFeB	Ø19x2	0.750	
SA-0119G	26x9	NdFeB	Ø19x 2.5	0.625	
SA-0120	26x7	NdFeB	Ø19.95x2.5	0.775	
SA-0120A	26x7	NdFeB	Ø19.95x2	0.775	
SA-0120B	26x6.5	NdFeB	Ø19.95x2	0.775	
SA-0120C	26x7.5	NdFeB	Ø19.95x2	0.775	6500
SA-0120D	26x8	NdFeB	Ø19.95x2	0.775	
SA-0120E	25.9x7.5	NdFeB	Ø19.95x1.5	0.800	
SA-0125	33x9.3	NdFeB	Ø24.92x3.5	0.840	
SA-0125A	32.6x10.2	NdFeB	Ø24.92x3.5	0.840	
SA-0125B	33x8.5	NdFeB	Ø24.95x3	1.025	
SA-0125C	37x9	NdFeB	Ø25x2.5	0.950	
SA-0125D	33x10	NdFeB	Ø24.92x3.5	1.040	11000
SA-0125E	36.5x10	NdFeB	Ø24.95x3.5	0.875	
SA-0125F	32x7.6	NdFeB	Ø24.95x2	0.925	10000
SA-0125FA	32x8.1	NdFeB	Ø24.95x2	0.925	
SA-0125FE	32x8.1	NdFeB	Ø24.95x5x2	0.925	
SA-0125G	36.2x7.5	NdFeB	Ø25.1x2	0.700	
SA-0125JA	32x6.7	NdFeB	Ø24.95x1.5	0.925	10000
SA-0125K	32x7.5	NdFeB	Ø24.95x1.5	0.725	13000
SA-0125L	35.5x18.7	NdFeB	Ø24.95x4	1.025	
SA-0125M	32x8.6	NdFeB	Ø24.95x3	0.925	10000
SA-0125N	33x8.5	NdFeB	Ø24.95x2	0.875	11500
SA-0125P	37x11.3	NdFeB	Ø24.95x3	0.725	
SA-0125Q	40x9	NdFeB	Ø24.9x3	1.000	9800
SA-0125R	32x10	NdFeB	Ø25x3	0.625	
SA-01A25	32x6.7	NdFeB	Ø24.95x1.5	0.925	
SA-01A25A	32x6.6	NdFeB	Ø25x1.5	0.850	
SA-01A25B	32x6.6	NdFeB	Ø25x3.2x1.5	0.850	
SA-01A25F	32.1x9	NdFeB	Ø24.9x2	0.850	
SA-0128	35x8.7	NdFeB	Ø27.66x6x2.6	0.920	
SA-0128A	36x8.3	NdFeB	Ø27.6x2	0.750	
SA-0128B	35x8.7	NdFeB	Ø27.66x6x2.6	0.920	
SA-0129	36x 7.5	NdFeB	Ø29x1.5	0.500	