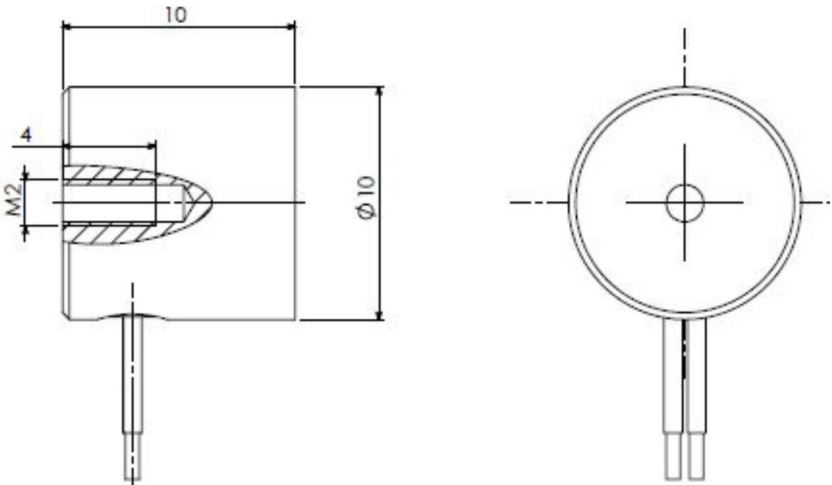
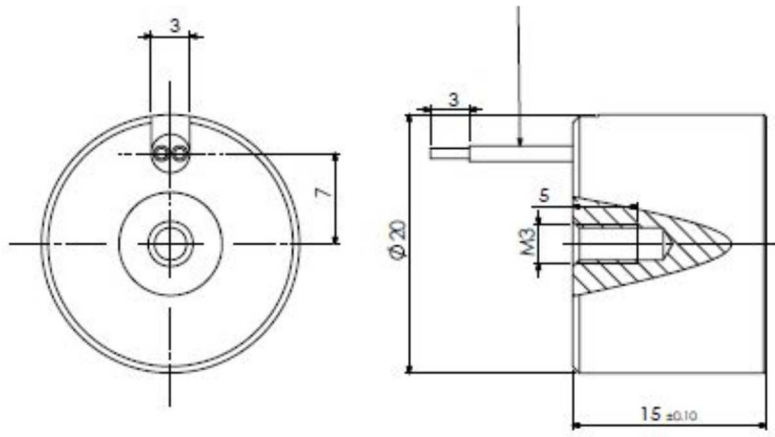
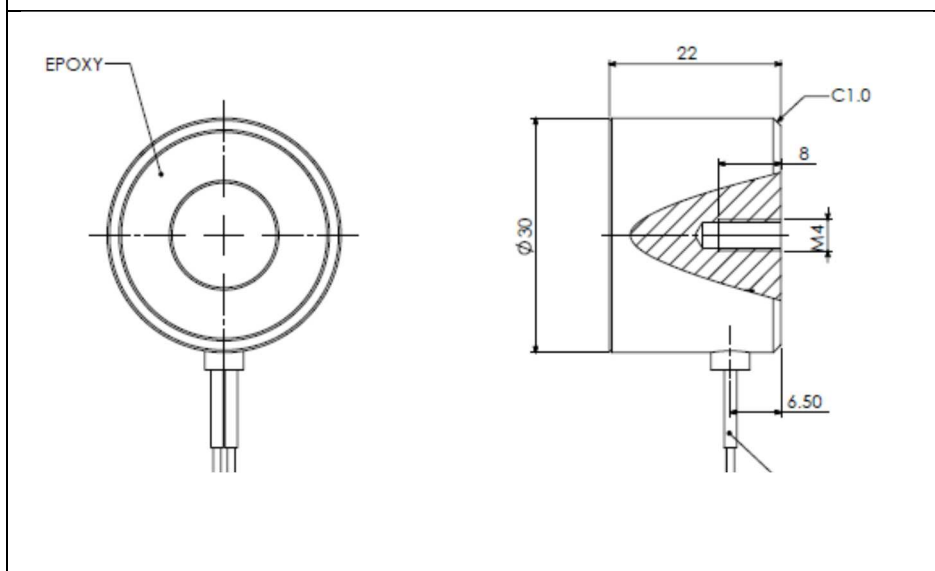


## ELECTROMAGNET CIRCULAR SHAPE – ENERGIZE TO HOLD:

<i>ITEM 10.10.05</i>	<i>ITEM 20.15.8</i>
 <p>Technical drawing of ITEM 10.10.05. The side view shows a circular magnet with a diameter of <math>\Phi 10</math> and a total length of 10. The magnet core is 4 units long and has an M2 thread. The top view shows a circular magnet with a central hole.</p>	 <p>Technical drawing of ITEM 20.15.8. The top view shows a circular magnet with a diameter of <math>\Phi 20</math> and a central hole with a diameter of 3. The magnet core is 7 units long. The side view shows a circular magnet with a diameter of <math>\Phi 20</math> and a total length of <math>15 \pm 0.10</math>. The magnet core is 5 units long and has an M3 thread.</p>
<p>Weight: 0,006 Kgs                  Power: 1.0W                  Holding force: 0.50 kgs (5N)                  Anchor Plate Thickness: 1mm                  Duty Cycles: 100%                  Voltage: 12VDC or 24VDC</p>	<p>Weight: 0,028 Kgs                  Power: 1.8W                  holding force: 8.0kgs (80N)                  Anchor Plate Thickness: 2mm                  Duty Cycles: 100%                  Voltage: 12VDC or 24VDC</p>

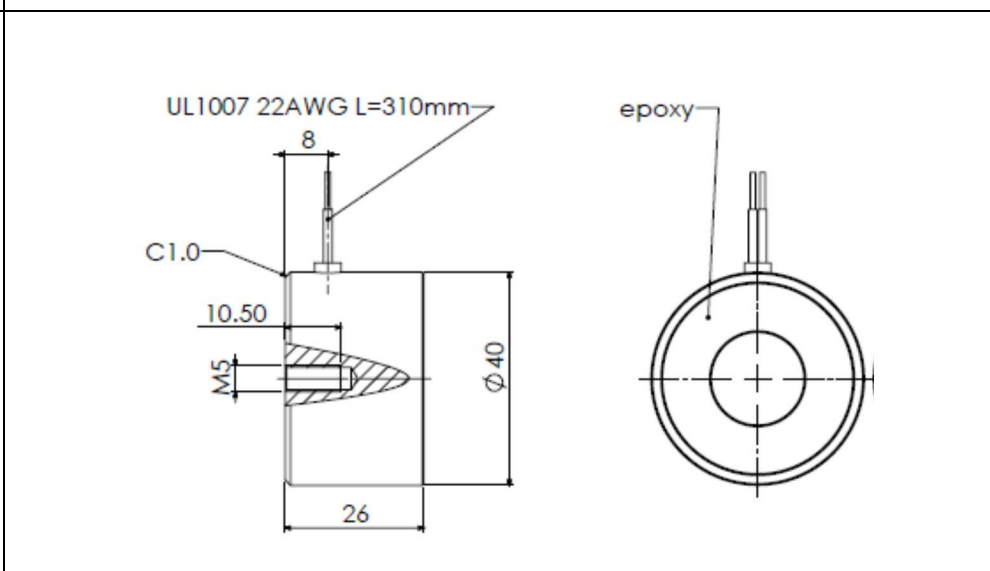
## ELECTROMAGNET CIRCULAR SHAPE – ENERGIZE TO HOLD:

**ITEM 30.22.20**



Weight: 0,104 Kgs  
 Power: 4.30W  
 holding force: 20kgs (200N)  
 Anchor Plate Thickness: 3mm  
 Duty Cycles: 100%  
 Voltage: 12VDC or 24VDC

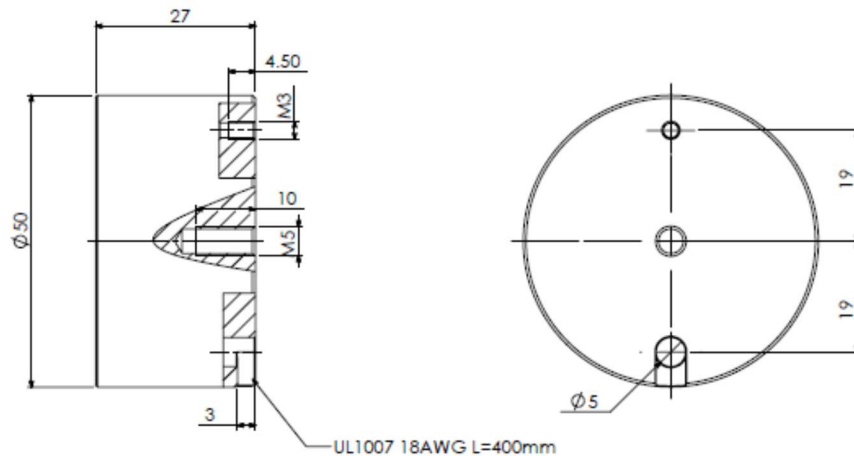
**ITEM 40.26.47**



Weight: 0,195 Kgs  
 Power: 5.60W  
 Holding force: 47kgs (470N)  
 Anchor Plate Thickness: 5mm  
 Duty Cycles: 100%  
 Voltage: 12VDC or 24VDC

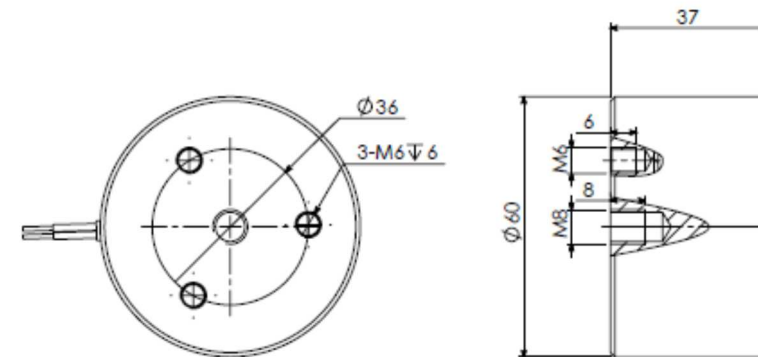
## ELECTROMAGNET CIRCULAR SHAPE – ENERGIZE TO HOLD:

### ITEM 50.27.76



Weight: 0,32 Kgs  
 Power: 6.50W  
 Holding force: 76kgs (760N)  
 Anchor Plate Thickness: 6mm  
 Duty Cycles: 100%  
 Voltage: 12VDC or 24VDC

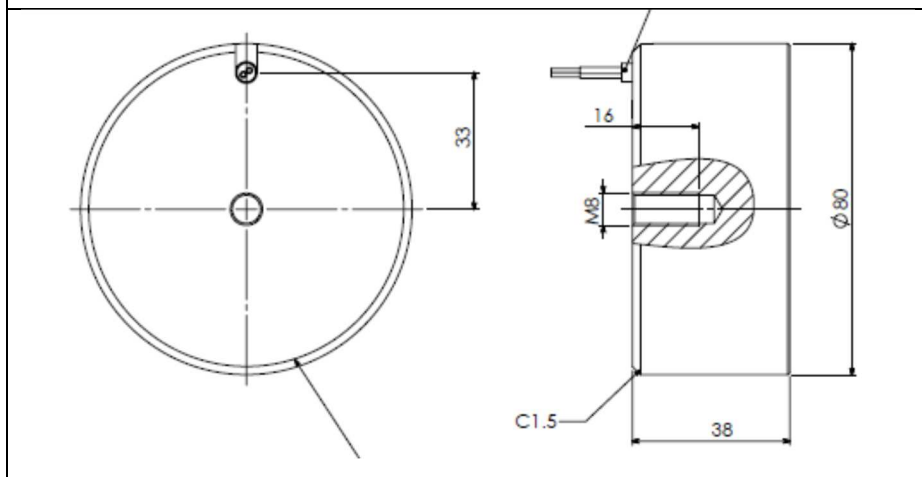
### ITEM 60.37.100



Weight: 0,6 Kgs  
 Power: 11.0W  
 Holding force: 100kgs (1000N)  
 Anchor Plate Thickness: 7mm  
 Duty Cycles: 100%  
 Voltage: 12VDC or 24VDC

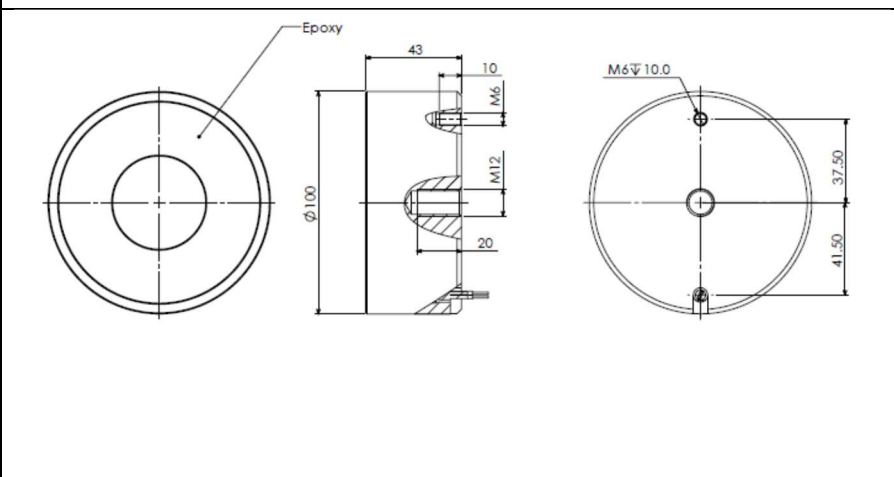
## ELECTROMAGNET CIRCULAR SHAPE – ENERGIZE TO HOLD:

**ITEM 80.38.240**



Weight: 1,12 Kgs  
 Power: 15.0W  
 Holding force: 240kgs (2400N)  
 Anchor Plate Thickness: 10mm  
 Duty Cycles: 100%  
 Voltage: 12VDC or 24VDC

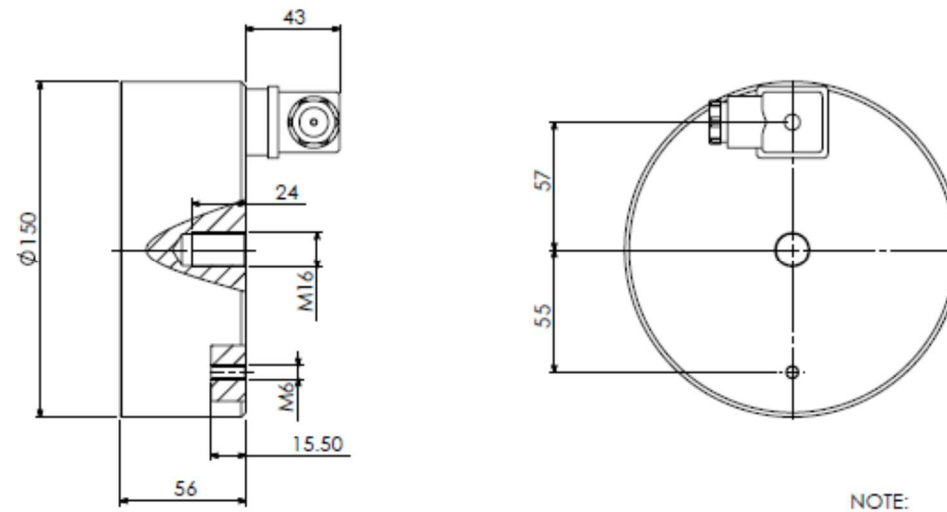
**ITEM 100.43.340**



Weight: 2,0 Kgs  
 Power: 20.50W  
 Holding force: 340kgs (3400N)  
 Anchor Plate Thickness: 15mm  
 Duty Cycles: 100%  
 Voltage: 12VDC or 24VDC

## ELECTROMAGNET CIRCULAR SHAPE – ENERGIZE TO HOLD:

**ITEM 150.56.930**



Weight: 5,8 Kgs  
Power: 37W  
Holding force: 930kgs (9300N)  
Anchor Plate Thickness: 25mm  
Duty Cycles: 100%  
Voltage: 12VDC or 24VDC