



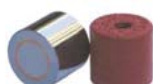
Linea calamita



Type: CA



Type: CB



Type: CC



Type: CD



Type: CE



Type: CF



Type: CG



Type: CH



Type: CI



Type: CL



Type: CM



Type: CN



Type: CO

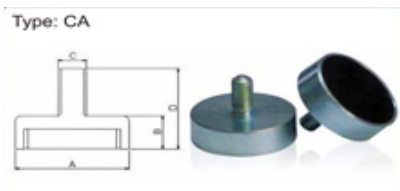


Type: CP

Compo Tech Co. propone i magneti di fissaggio "CALAMITA": la linea completa di magneti totalmente personalizzabili. Gli assemblati, formati da un nucleo magnetico incollato o iniettato in un corpo d'acciaio tramite sistemi di assemblaggio moderni ed attrezzature di primo livello, sono disponibili in diverse qualità come Alnico, Neodimio, Ferrite o Samario Cobalto, a seconda dell'applicazione finale. I magneti di fissaggio "CALAMITA" possono fornire fino a trenta volte la forza di un singolo magnete, rendendoli ideali in molte applicazioni.



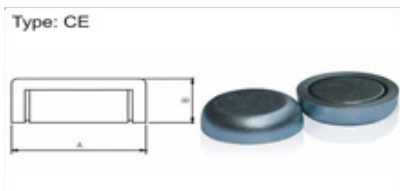
Linea calamita Tipo CA



Tipo CA								
Code	Material	POT				Magnet	Coated	Pull Force (N)
		A	B	C	D			
CA-F0110	Fe37	10	4,5	M3	11,5	Ferrite	Zn	4
CA-F0113	Fe37	13	4,5	M3	11,5	Ferrite	Zn	10
CA-F0116	Fe37	16	4,5	M3	11,5	Ferrite	Zn	18
CA-F0120	Fe37	20	6	M3	13	Ferrite	Zn	30
CA-F0122	Fe37	22	7	M5	17	Ferrite	Zn	35
CA-F0122A	Fe37	22	6	M5	16	Ferrite	Ni	35
CA-F0123	Fe37	23	7	M5	20	Ferrite	Zn	35
CA-F0125	Fe37	25	7	M4	15	Ferrite	Zn	40
CA-F0132	Fe37	32	7	M5	23	Ferrite	Zn	80
CA-F0132A	Fe37	32	7	M6	23	Ferrite	Zn	80
CA-F0132B	Fe37	32	7	M4	15	Ferrite	Zn	80
CA-N0163	Fe37	63	14	M8	27	NdFeB	Zn	350
CA-N0110	Fe37	10	4,5	M4	12,5	NdFeB	Zn	30
CA-N0113	Fe37	13	4,5	M5	12,5	NdFeB	Zn	60
CA-N0116	Fe37	16	4,5	M6	12,5	NdFeB	Zn	100
CA-N0118	Fe37	18	7	M5	17	NdFeB	Zn	100
CA-N0120	Fe37	20	7	M5	17	NdFeB	Zn	150
CA-N0120A	Fe37	20	7	M6	14	NdFeB	Zn	150
CA-N0120B	Fe37	20	6	M6	16	NdFeB	Zn	150
CA-N0122	Fe37	22	7	M5	17	NdFeB	Zn	150
CA-N0125A	Fe37	25	7	M6	17	NdFeB	Zn	270
CA-N0125B	Fe37	25	7	10	25	NdFeB	Zn	270
CA-N0130	Fe37	30	5	M6	25	NdFeB	Ni	300
CA-N0130A	Fe37	30	5	M6	28	NdFeB	Zn	300
CA-N0132	Fe37	32	7	M6	10,5	NdFeB	Zn	450
CA-N0132A	Fe37	32	7	M6	19	NdFeB	Zn	450
CA-N0132B	Fe37	32	7	M6	17	NdFeB	Zn	450
CA-N0132C	Fe37	32	7	M6	17	NdFeB	Rubber	200
CA-N0135	Fe37	35	7	M6	19	NdFeB	Zn	300
CA-N0135A	Fe37	35	15	M6	40	NdFeB	Zn	400



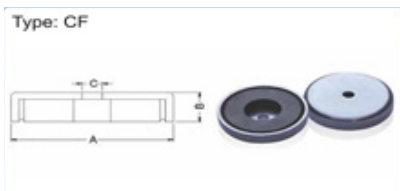
Linea calamita Tipo CE



Tipo CE								
Code	Material	POT				Magnet	Coated	Pull Force (N)
		A	B	C	D			
CE-F0510	Fe37	10	4,5	-	-	Ferrite	Zn	4
CE-F0513	Fe37	13	4,5	-	-	Ferrite	Zn	10
CE-F0516	Fe37	16	4,5	-	-	Ferrite	Zn	18
CE-F0517	Fe37	17	5	-	-	Ferrite	Zn	24
CE-F0520	Fe37	20	6	-	-	Ferrite	Zn	30
CE-F0522	Fe37	22	4	-	-	Ferrite	Zn	34
CE-F0525	Fe37	25	7	-	-	Ferrite	Zn	40
CE-F0532	Fe37	32	7	-	-	Ferrite	Zn	80
CE-F0536	Fe37	36	7.07	-	-	Ferrite	Zn	100
CE-F0540	Fe37	40	8	-	-	Ferrite	Zn	125
CE-F0547	Fe37	47	9	-	-	Ferrite	Zn	180
CE-F0550	Fe37	50	10	-	-	Ferrite	Zn	220
CE-F0557	Fe37	57	10,5	-	-	Ferrite	Zn	280
CE-F0563	Fe37	63	14	-	-	Ferrite	Zn	350
CE-F0580	Fe37	80	18	-	-	Ferrite	Zn	600
CE-F05100	Fe37	100	22	-	-	Ferrite	Zn	900
CE-F05125	Fe37	125	26	-	-	Ferrite	Zn	1300
CE-N0506	Fe37	6	4,5	-	-	NdFeB	Zn	5
CE-N0508	Fe37	8	4,5	-	-	NdFeB	Zn	13
CE-N0510	Fe37	10	4,5	-	-	NdFeB	Zn	25
CE-N0513	Fe37	13	4,5	-	-	NdFeB	Zn	60
CE-N0516	Fe37	16	4,5	-	-	NdFeB	Zn	95
CE-N0516A	Fe37	16	4	-	-	NdFeB	Zn	135
CE-N0518	Fe37	18	5,5	-	-	NdFeB	Ni	95
CE-N0520	Fe37	20	6	-	-	NdFeB	Zn	150
CE-N0520A	Fe37	20	20	-	-	NdFeB	Cr	70
CE-N0521	Fe37	21	4,2	-	-	NdFeB	Ni	250
CE-N0525	Fe37	25	7	-	-	NdFeB	Zn	270
CE-N0530	Fe37	30	5,1	-	-	NdFeB	Ni	300
CE-N0532	Fe37	32	7	-	-	NdFeB	Zn	450



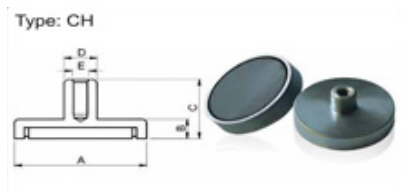
Linea calamita Tipo CF



Tipo CF								
Code	Material	POT				Magnet	Coated	Pull Force (N)
		A	B	C	D			
CF-F0632	Fe37	32	6	6	-	Ferrite	Cr	65
CF-F0636B	Fe37	36	7	4,8	-	Ferrite	Ni	70
CF-F0645	Fe37	45	10,3	4,5	-	Ferrite	Zn	70
CF-F0645A	Fe37	45	10,3	7	-	Ferrite	Ni	70
CF-F0645B	Fe37	45	10,3	4	-	Ferrite	Ni	70
CF-F0650	Fe37	50	10,5	8,5	-	Ferrite	Zn	180
CF-F0651	Fe37	51	6,3	4,7	-	Ferrite	Cr	60
CF-F0651.6	Fe37	51,6	7,85	5,2	-	Ferrite	Cr	180
CF-F0653	Fe37	53	11	6,5	-	Ferrite	Zn	180
CF-F0653A	Fe37	53	10,3	4	-	Ferrite	Ni	180
CF-F0655	Fe37	55	11	4,5	-	Ferrite	Zn	180
CF-F0660.2	Fe37	60,2	9	8	-	Ferrite	Cr	220
CF-F0660.3	Fe37	60,3	8,9	6,4	-	Ferrite	Cr	190
CF-F0663	Fe37	63	14	6,5	-	Ferrite	Zn	290
CF-F0667	Fe37	67	9,5	6,3	-	Ferrite	Cr	265
CF-F0667B	Fe37	67	10,8	10,16	-	Ferrite	Zn	355
CF-F0671	Fe37	71	15,3	10,5	-	Ferrite	Zn	400
CF-F0671A	Fe37	71	9,5	6,3	-	Ferrite	Cr	400
CF-F0676	Fe37	76	12	6	-	Ferrite	Zn	260
CF-F0679.5	Fe37	79,5	11	8,3	-	Ferrite	Cr	350
CF-F0680	Fe37	80	18	6,5	-	Ferrite	Zn	540
CF-F0680A	Fe37	80	10,5	7,2	-	Ferrite	Cr	350
CF-F0680B	Fe37	80	11,11	9,525	-	Ferrite	Cr	300
CF-F0680C	Fe37	80	12,7	10,16	-	Ferrite	Zn	450
CF-F0681.3	Fe37	81,3	10,5	10	-	Ferrite	Ni	360
CF-0681.3A	Fe37	81,3	11	7,1	-	Ferrite	Cr	360
CF-F0681.3B	Fe37	81,3	10,8	12,7	-	Ferrite	Cr	360
CF-F0683	Fe37	83	18	10,5	-	Ferrite	Zn	600
CF-F0688	Fe37	88	18	8,5	-	Ferrite	Ni	550
CF-F0695	Fe37	95	12,7	12,7	-	Ferrite	Cr	620
CF-F0696.3	Fe37	96,3	12,7	9,6	-	Ferrite	Cr	600
CF-F06100A	Fe37	100	22	10,5	-	Ferrite	Cr	680
CF-F06124	Fe37	124	12,7	12,7	-	Ferrite	Cr	700
CF-N0620	Fe37	20	4	3,1	-	NdFeB	Zn	80
CF-N0625	Fe37	25	7	6	-	NdFeB	Zn	100
CF-N0636	Fe37	36	7,1	4,8	-	NdFeB	Zn	250
CF-N0640A	Fe37	40	8	5,5	-	NdFeB	Zn	200



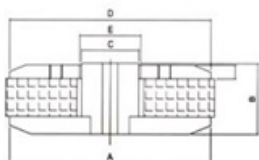
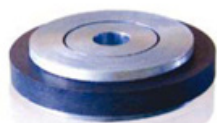
Linea calamita Tipo CH



Tipo CH									
Code	Material	POT					Magnet	Coated	Pull Force (N)
		A	B	C	D	E			
CH-F0610	Fe37	10	4.5	11.5	6	M3	Ferrite	Zn	4
CH-F0813	Fe37	13	4.5	11.5	6	M3	Ferrite	Zn	10
CH-F0816	Fe37	16	4.5	11.5	6	M3	Ferrite	Zn	18
CH-F0820	Fe37	20	6	13	6	M3	Ferrite	Zn	30
CH-F0825	Fe37	25	7	15	8	M4	Ferrite	Zn	40
CH-F0825A	Fe37	25	7	16	10	M5	Ferrite	Zn	40
CH-F0825C	Fe37	25	7	15	8	M4	Ferrite	Zn	40
CH-F0832	Fe37	32	7	15	8	M4	Ferrite	Zn	80
CH-F0836	Fe37	36	7.7	16	8	M4	Ferrite	Zn	100
CH-F0840	Fe37	40	8	16.5	8	M4	Ferrite	Zn	125
CH-F0840A	Fe37	40	8	18	10	M5	Ferrite	Zn	125
CH-F0847	Fe37	47	9	17	8	M4	Ferrite	Zn	180
CH-F0850	Fe37	50	10	18.5	8	M4	Ferrite	Zn	220
CH-F0850A	Fe37	50	10	22	12	M6	Ferrite	Zn	220
CH-F0850B	Fe37	50	10	18.5	8	M4	Ferrite	Cr	220
CH-F0857	Fe37	57	10.5	18.5	8	M4	Ferrite	Zn	280
CH-F0863	Fe37	63	14	30	15	M8	Ferrite	Zn	350
CH-F0880	Fe37	80	18	34	20	M10	Ferrite	Zn	600
CH-F0880A	Fe37	80	18	34	20	M10	Ferrite	Cr	600
CH-F08100	Fe37	100	22	43	22	M12	Ferrite	Zn	900
CH-F08125	Fe37	125	26	50	25	M14	Ferrite	Zn	1300
CH-F08125A	Fe37	125	26	50	25	M14	Ferrite	Cr	1300
CH-N0806	Fe37	6	4.5	11.5	6	M3	NdFeB	Zn	5
CH-N0808	Fe37	8	4.5	11.5	6	M3	NdFeB	Zn	13
CH-N0810	Fe37	10	4.5	11.5	6	M3	NdFeB	Zn	25
CH-N0810A	Fe37	10	4.5	11.5	6	M3	NdFeB	Zn	25
CH-N0813	Fe37	13	4.5	11.5	6	M3	NdFeB	Zn	60
CH-N0816	Fe37	16	4.5	11.5	6	M4	NdFeB	Zn	95
CH-N0816A	Fe37	16	6	11.5	8	M4	NdFeB	Zn	95
CH-N0816B	Fe37	16	4	11.5	6	M4	NdFeB	Zn	95
CH-N0820	Fe37	20	4.5	13	8	M4	NdFeB	Zn	140
CH-N0820A	Fe37	20	6	13	8	M4	NdFeB	Zn	140
CH-N0820B	Fe37	20	6	13	8	M4	NdFeB	Zn	140
CH-N0825	Fe37	25	6	14	8	M4	NdFeB	Zn	200
CH-N0825A	Fe37	25	7	14	8	M4	NdFeB	Zn	200
CH-N0825B	Fe37	25	7	14	8	M4	NdFeB	Zn	200
CH-N0832	Fe37	32	7	15.5	10	M5	NdFeB	Zn	350
CH-N0832A	Fe37	32	7	15.5	10	M5	NdFeB	Zn	350
CH-N0832B	Fe37	32	7	15.5	10	M5	NdFeB	Zn	350
CH-N0843	Fe37	43	4.2	10.1	8	M4	NdFeB	Zn	128
CH-N0843A	Fe37	43	5.1	10.3	8	M4	NdFeB	Zn	128



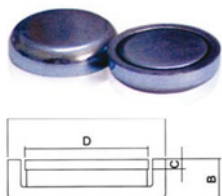
Linea calamita Tipo SC



TIPO SC					
CODE	T YOKE SIZE (AXB-C)	MAGNET FERRITE SIZE	WASHER SIZE (DxExH)	AIR GAP (mm)	MAGNETIC FLUX (GS)
SC-0400	Ø210x54.6-Ø75.4	Ø220xØ110x25.4	Ø210x Ø78.5x10	1.550	
SC-0401	Ø70x23-Ø24.95	Ø80xØ32x15	Ø70xØ26.5x3	0.775	
SC-0402	Ø130x39-Ø36.9	Ø140xØ63x20	Ø130xØ39.4x8	1.250	
SC-0403	Ø195x42-Ø61.9	Ø200xØ80x20	Ø195xØ65.1x10	1.600	
SC-0404	Ø215x46.4-Ø98.5	Ø220xØ110x25.4	Ø215xØ104.5x8	3.000	
SC-0405	Ø130x38-Ø49.9	Ø130xØ63x20	Ø130xØ52.6x8	1.350	
SC-0406	Ø177x42-Ø61.9	Ø200xØ80x20	Ø177xØ64.9x10	1.500	
SC-0407	Ø110x41-Ø38.9	Ø115xØ43x22	Ø110xØ39.4x8	1.250	
SC-0408	Ø215xØ46.4- Ø98.5	Ø220xØ110x25.4	Ø215xØ102.1x8	1.800	
SC-0409	Ø177x42-Ø61.8	Ø200xØ80x20	Ø177xØ66.1x10	2.150	
SC-0410	Ø150x40.5-Ø49.9	Ø160xØ57x17.5	Ø150xØ52.7x8	1.400	
SC-0410A	Ø150x40.5-Ø49.9	Ø160xØ57x17.5	Ø150xØ52.7x8	2.150	
SC-0411	Ø57x21-Ø24.95	Ø59.5xØ32x13	Ø63xØ26.15x3	0.600	
SC-0412	Ø200xØ61.4- Ø101.6	Ø215xØ115x25.4	Ø200xØ106x14.3	2.200	
SC-0413	Ø200x61.4-Ø76.2	Ø212xØ99x25.4	Ø200xØ81x14.3	2.400	
SC-0414	Ø155.6x46.83- Ø63.119	Ø165xØ70x21	Ø155.56xØ65.66x 9.6	1.270	
SC-0415	Ø155.6x46.83- Ø50.75	Ø165xØ60x21	Ø155.58xØ52.96x 9.6	1.105	
SC-0416	Ø198x10-Ø78	Ø200xØ110x23	Ø176xØ103.5x10	12.750	10400
SC-0417	Ø94x27-Ø50	Ø102xØ60x17	Ø94xØ52x4	1.000	11000
SC-0418	Ø94x6-Ø25	Ø100xØ45x18	Ø94xØ38.6x5	6.800	15000



Linea calamita Tipo SA



TIPO SA					
CODE	T YOKE Ø (AXB)	MAGNET	WASHER (DxC)	AIR GAP (DxC)	MAGNETIC FLUX (GS)
SA-0113	18x5	NdFeB	Ø12.8x 1.5	0.700	
SA-0113A	18x6	NdFeB	Ø12.95x2	0.575	
SA-0113B	21.4x7	NdFeB	Ø12.95x1.5	0.600	
SA-0113C	26.5x4.9	NdFeB	Ø12.95x1.5	0.750	6500
SA-0113E	18.5x6	NdFeB	Ø12.95x1.5	0.675	
SA-0113F	18x6.5	NdFeB	Ø13x2	0.625	
SA-01B13	21.5x8.5	NdFeB	Ø12.95 x2	0.625	
SA-0119	27.2x7	NdFeB	Ø18.95x2	1.125	
SA-0119A	26x6.5	NdFeB	Ø19x 1.5	1.250	
SA-0119B	26x6.5	NdFeB	Ø19x2	1.250	
SA-0119C	24.6x8.3	NdFeB	Ø18.6x 1.3	1.000	11000
SA-0119D	27.5x8.5	NdFeB	Ø19x2	0.750	
SA-0119DA	27.3x8.5	NdFeB	Ø19x2	0.750	10000
SA-0119F	26.1x8	NdFeB	Ø19x2	0.750	
SA-0119G	26x9	NdFeB	Ø19x 2.5	0.625	
SA-0120	26x7	NdFeB	Ø19.95x2.5	0.775	
SA-0120A	26x7	NdFeB	Ø19.95x2	0.775	
SA-0120B	26x6.5	NdFeB	Ø19.95x2	0.775	
SA-0120C	26x7.5	NdFeB	Ø19.95x2	0.775	6500
SA-0120D	26x8	NdFeB	Ø19.95x2	0.775	
SA-0120E	25.9x7.5	NdFeB	Ø19.95x1.5	0.800	
SA-0125	33x9.3	NdFeB	Ø24.92x3.5	0.840	
SA-0125A	32.6x10.2	NdFeB	Ø24.92x3.5	0.840	
SA-0125B	33x8.5	NdFeB	Ø24.95x3	1.025	
SA-0125C	37x9	NdFeB	Ø25x2.5	0.950	
SA-0125D	33x10	NdFeB	Ø24.92x3.5	1.040	11000
SA-0125E	36.5x10	NdFeB	Ø24.95x3.5	0.875	
SA-0125F	32x7.6	NdFeB	Ø24.95x2	0.925	10000
SA-0125FA	32x8.1	NdFeB	Ø24.95x2	0.925	
SA-0125FE	32x8.1	NdFeB	Ø24.95x5x2	0.925	
SA-0125G	36.2x7.5	NdFeB	Ø25.1x2	0.700	
SA-0125JA	32x6.7	NdFeB	Ø24.95x1.5	0.925	10000
SA-0125K	32x7.5	NdFeB	Ø24.95x1.5	0.725	13000
SA-0125L	35.5x18.7	NdFeB	Ø24.95x4	1.025	
SA-0125M	32x8.6	NdFeB	Ø24.95x3	0.925	10000
SA-0125N	33x8.5	NdFeB	Ø24.95x2	0.875	11500
SA-0125P	37x11.3	NdFeB	Ø24.95x3	0.725	
SA-0125Q	40x9	NdFeB	Ø24.9x3	1.000	9800
SA-0125R	32x10	NdFeB	Ø25x3	0.625	
SA-01A25	32x6.7	NdFeB	Ø24.95x1.5	0.925	
SA-01A25A	32x6.6	NdFeB	Ø25x1.5	0.850	
SA-01A25B	32x6.6	NdFeB	Ø25x3.2x1.5	0.850	
SA-01A25F	32.1x9	NdFeB	Ø24.9x2	0.850	
SA-0128	35x8.7	NdFeB	Ø27.66x6x2.6	0.920	
SA-0128A	36x8.3	NdFeB	Ø27.6x2	0.750	
SA-0128B	35x8.7	NdFeB	Ø27.66x6x2.6	0.920	
SA-0129	36x 7.5	NdFeB	Ø29x1.5	0.500	